

SECTION 51-2 REVIEW

FEMALE REPRODUCTIVE SYSTEM

VOCABULARY REVIEW Explain the relationship between the terms in each of the following pairs of terms.

1. ovulation, ovary _____

2. menopause, menstruation _____

3. uterus, cervix _____

4. menstrual cycle, follicular phase _____

5. corpus luteum, luteal phase _____

MULTIPLE CHOICE Write the correct letter in the blank.

- _____ 1. How many mature eggs does each complete meiotic division yield?
a. one b. two c. three d. four
- _____ 2. Fallopian tubes are connected to
a. the corpus luteum. c. the vagina.
b. the urethra. d. the uterus.
- _____ 3. Which stage of the menstrual cycle is characterized by thickening of the uterine lining?
a. follicular phase b. luteal phase c. menstruation d. ovulation
- _____ 4. Which of the following hormones initiates ovulation?
a. progesterone c. luteinizing hormone
b. follicle-stimulating hormone d. oxytocin
- _____ 5. Which of the following hormones acts directly on the uterine lining during the menstrual cycle?
a. estrogen c. follicle-stimulating hormone
b. luteinizing hormone d. testosterone

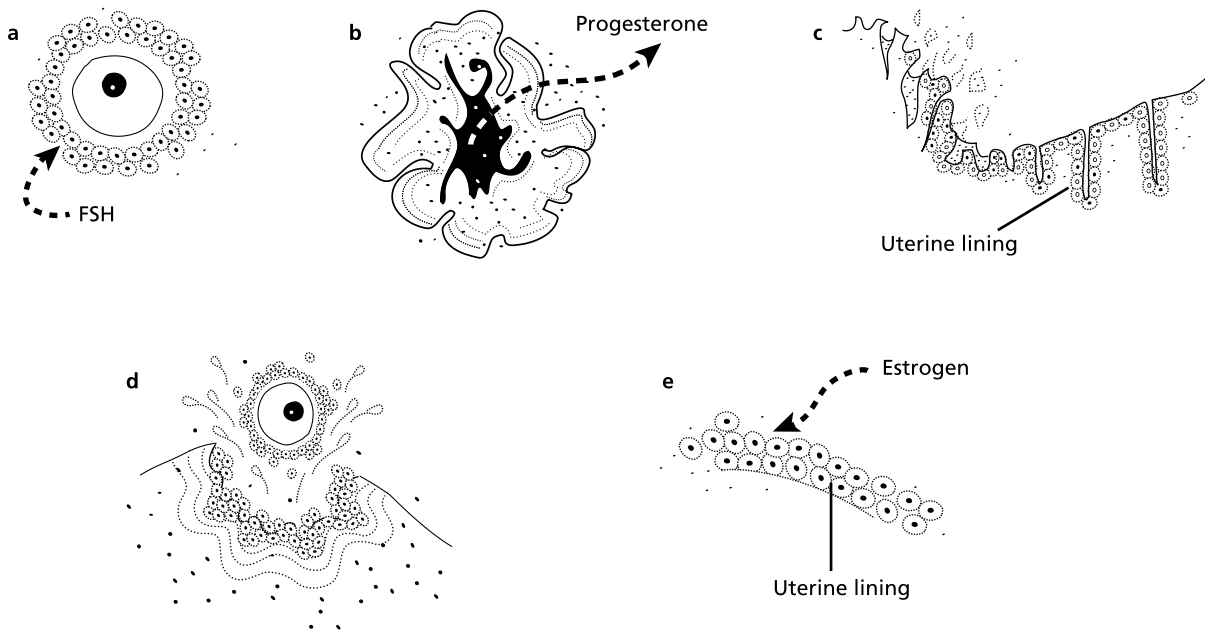
SHORT ANSWER Answer the questions in the space provided.

- Does the male or female gamete contribute more chromosomes to the fertilized egg? Explain your answer. _____

- Describe two structural differences between a mature sperm and a mature egg. _____

- Critical Thinking** What does the onset of menopause indicate about the number of immature eggs remaining in the ovaries? _____

STRUCTURES AND FUNCTIONS Use the figures of the menstrual cycle below to answer the following question.



Copyright © by Holt, Rinehart and Winston. All rights reserved.

Briefly describe what is depicted in each figure. _____

