

SECTION 47-2 REVIEW

SPECIFIC DEFENSES: THE IMMUNE SYSTEM

VOCABULARY REVIEW Define the following terms.

1. plasma cell _____

2. antigen _____

3. memory cell _____

4. antibody _____

5. allergy _____

MULTIPLE CHOICE Write the correct letter in the blank.

- _____ 1. Which of the following are *not* lymphocytes?
a. memory cells b. helper T cells c. macrophages d. B cells
- _____ 2. Bone marrow is considered part of the immune system because it
a. filters pathogens from blood. c. produces white blood cells.
b. drains into the lymphatic system. d. produces plasma cells.
- _____ 3. B cells
a. are involved with the humoral immune response.
b. kill infected cells.
c. mature within the thymus.
d. are derived from plasma cells.
- _____ 4. Interleukins are secreted by
a. cytotoxic T cells. b. helper T cells. c. plasma cells. d. All of the above
- _____ 5. Cell-mediated immune responses require
a. production of antibodies. c. B cells.
b. helper T cells. d. a secondary immune response.

SHORT ANSWER Answer the questions in the space provided.

1. What signals does a T cell require in order to divide? _____

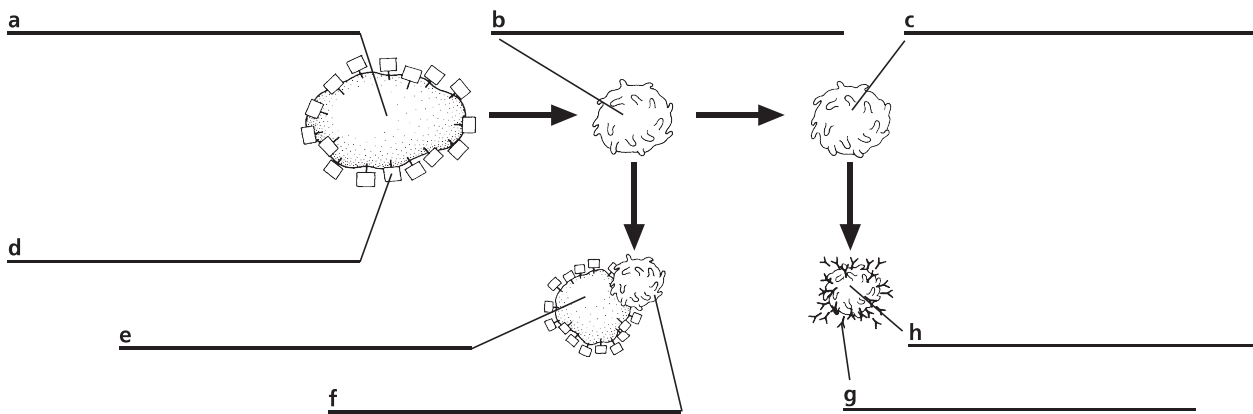
2. How do vaccinations produce immunity? _____

3. How do antibodies provide defense from viruses? _____

4. **Critical Thinking** Would you expect defective T cells or defective B cells to be the primary cause of autoimmune diseases? Explain your answer. _____

STRUCTURES AND FUNCTIONS Use the figure of the immune response below to answer the following questions.

1. Label each part of the figure in the spaces provided.



2. What event triggers the chain of events shown in the figure? _____

3. How would an enzyme that destroys cytokines affect both the cell-mediated and humoral immune responses? _____

